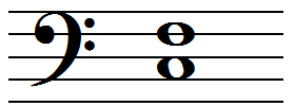


THEOTOKION

Liturgie de saint Jean Chrysostome



Se-cours in - fail - li - ble des chré-tiens

in- ter - ces - sion - per - pé - tu - elle au - près du Cré - a - teur.

Ne mé-prise pas les voix sup- pli - an - tes des pé-cheurs,

mais presse-toi dans ta bon - té, de nous se - cou - rir

nous qui, avec con - fian - ce te cri - ons : hâ - te toi

d'in - ter - cé - der, pres - se - toi de sup - pli - er, O Mè - re de Dieu,



veille in-las-sa - ble-ment sur tous ceux qui t'hon-no - rent!

The image shows a musical score for three staves. The top staff is a treble clef with a key signature of one flat (B-flat). It contains a series of chords, mostly dyads and triads, with stems pointing up. The middle staff is a treble clef with a key signature of one flat, containing a single melodic line of quarter and half notes. The bottom staff is a bass clef with a key signature of one flat, containing a single melodic line of quarter and half notes. The lyrics are centered between the middle and bottom staves.