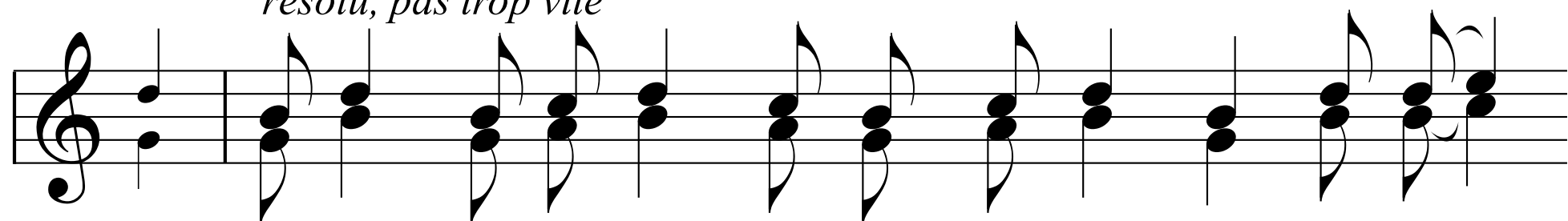


PETITE ENTRÉE - DIMANCHE ET TEMPS PASCAL

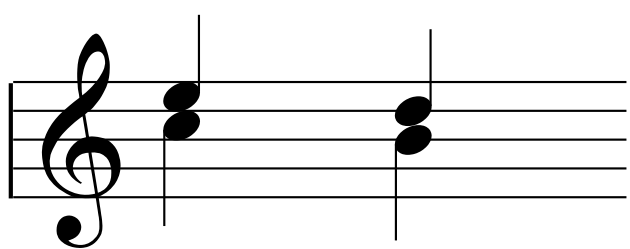
Diacre : Sagesse, tenons-nous droits!

M. Kovalevsky

*résolu, pas trop vite*



Hommes : Ve---nez, a---do---rons et pros---ter---nons---nous de---vant

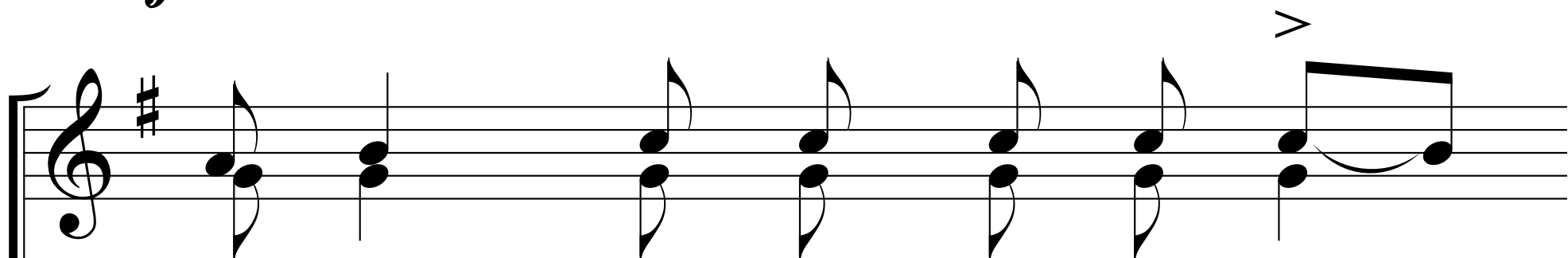
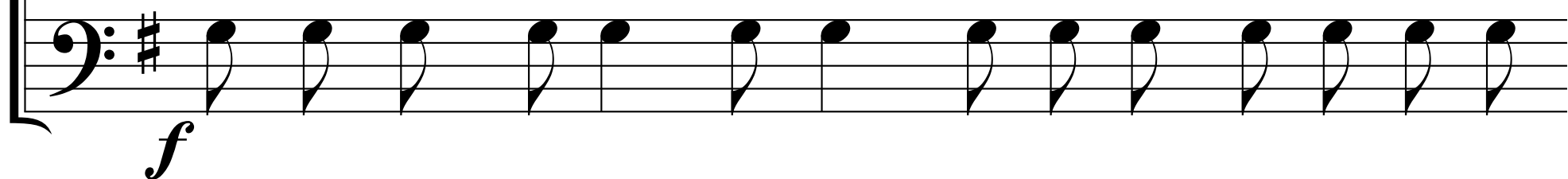


le Christ.

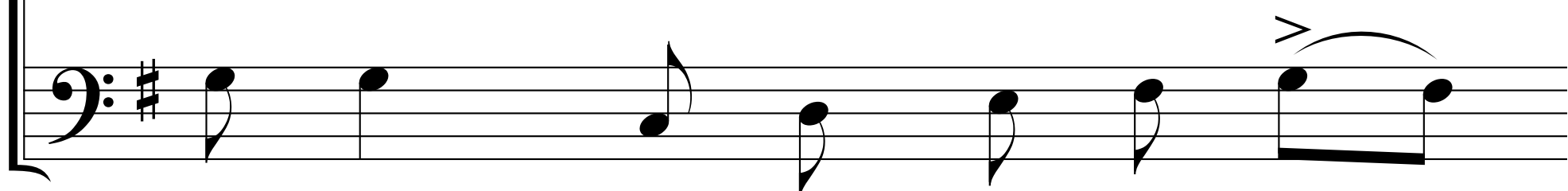
Choeur



*f* Sau---ve nous, Ô Fils de Dieu, Toi qui es res---sus---ci---té



des morts, nous qui Te chan-----tons : —



The image shows a musical score for the hymn 'Al-le-lu-ia!'. It consists of three staves. The top staff is a vocal line in G major (one sharp) with a treble clef. The middle staff is an instrumental line, also in G major with a treble clef, which appears to be a piano accompaniment. The bottom staff is a bass line in G major with a bass clef. The lyrics 'Al-le-lu-ia!' are written below the middle staff, with a dashed line indicating a long note for 'lu'. The music features various rhythmic values, including eighth and sixteenth notes, and rests. There are dynamic markings such as accents (>) and slurs throughout the score.

On chante ensuite les tropaires et kondakions du jour suivis du Theotokion si opportun. Voir les règles sur la page suivante.